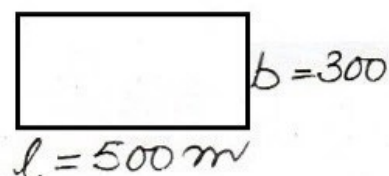


1. area of land =  $lb$

=  $500 \times 300$

=  $150000 \text{ m}^2$



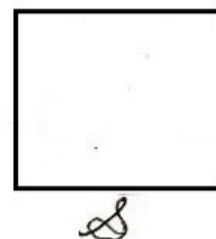
cost of  $1 \text{ m}^2$  land = Rs 10000

cost of  $150000 \text{ m}^2$  land =  $150000 \times 10000$   
 = Rs 1,50,00,00,000

2. Perimeter of square park =  $320 \text{ m}$

4 side = 320

$\Rightarrow$  Side =  $\frac{320}{4}$



=  $80 \text{ m}$

area of park =  $\text{side}^2$

=  $80^2$

=  $6400 \text{ m}^2$

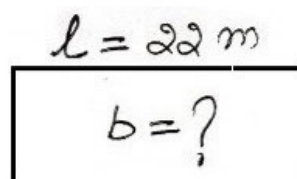
3. area of plot =  $440 \text{ m}^2$

$lb = 440$

$b \times 22 = 440$

$\Rightarrow b = \frac{440}{22} = 20$

breadth =  $20 \text{ m}$



Perimeter of plot =  $2(l+b)$  | =  $2 \times 42$   
 =  $2(22+20)$  | =  $84 \text{ m}$