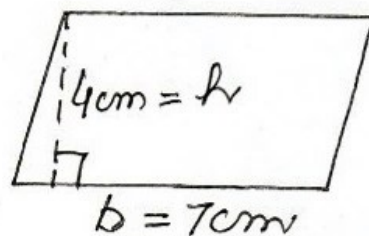
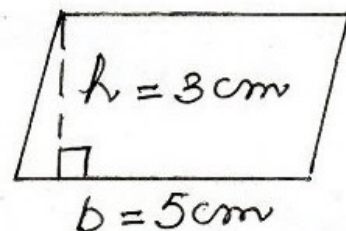


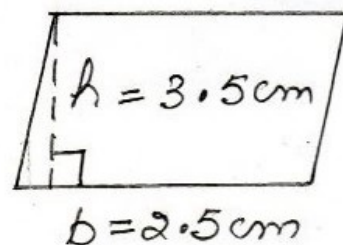
1a) area of $\parallel\text{gm}$
 $= \text{base} \times \text{corresponding altitude}$
 $= bh$
 $= 7 \times 4$
 $= 28 \text{ cm}^2$



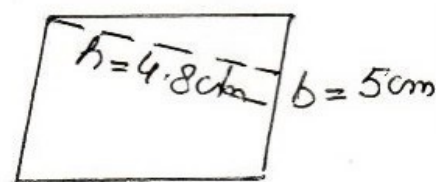
b) area of $\parallel\text{gm} = bh$
 $= 5 \times 3$
 $= 15 \text{ cm}^2$



c) area of $\parallel\text{gm} = bh$
 $= 2.5 \times 3.5$
 $= 8.75 \text{ cm}^2$



d) area of $\parallel\text{gm} = bh$
 $= 5 \times 4.8$
 $= 24 \text{ cm}^2$



e) area of $\parallel\text{gm} = bh$
 $= 2 \times 4.4$
 $= 8.8 \text{ cm}^2$

