

7

Perimeter of rectangle = 130 cm

$$2(l+b) = 130 \quad 65$$

$$l+30 = 65$$

$$\Rightarrow l = 65 - 30$$

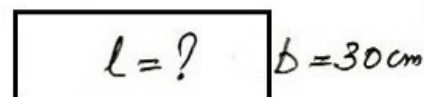
$$= 35$$

length = 35 m

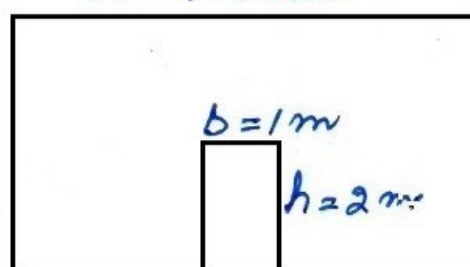
area of rectangle = lb

$$= 35 \times 30$$

$$= 1050 \text{ cm}^2$$



$L = 4.5 \text{ cm}$



$H = 3.6 \text{ m}$

area to be white washed = $LB - lb$

$$= 4.5 \times 3.6 - 2 \times 1$$

$$= 16.2 \text{ m}^2$$

rate of white washing per sq. m = ₹ 20

cost of white washing the wall = 16.2×20
 $= ₹ 324.00$