

④ Perimeter of plot = 100 m

$$2(l+b) = 100 \quad 50$$

$$35 + b = 50$$

$$\Rightarrow b = 50 - 35$$

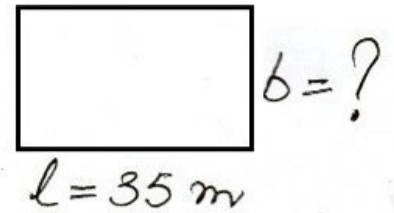
$$\Rightarrow b = 15$$

\therefore breadth = 15 m

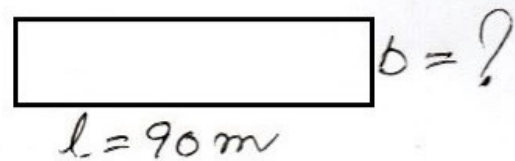
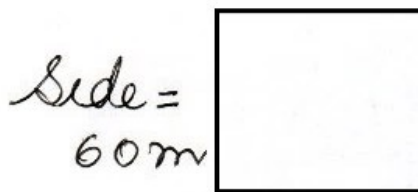
$$\text{area} = lb$$

$$= 35 \times 15$$

$$= 525 \text{ m}^2$$



⑤



area of rectangular plot

= area of square plot

$$lb = \text{side}^2$$

$$90b = 60^2$$

$$b = 40$$

\therefore breadth = 40 m